

VeriWise TRUCKING–Satellite Door and Cargo Sensors

You gain visibility of your trailer fleet with GE's VeriWise™ TRUCKING-Satellite solution. You gain visibility of the door status and the inside of your trailer with the Door and Cargo Sensors. Greater visibility translates into greater efficiency, and greater efficiency leads to greater profitability.

Time-Tested and Customer Proven

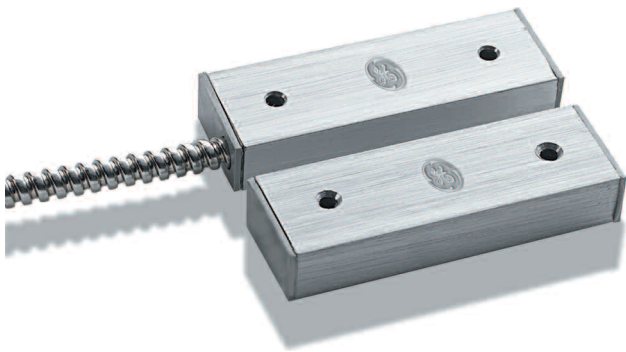
With 10 years of experience working with customers to develop and deliver proven trailer fleet management tracking solutions, and 50 years in the service of the transportation industry, we are driving the evolution with our customers. Our combined satellite and cellular based solutions portfolio is unmatched in the industry, and we have demonstrated that trailer fleet management works – and pays. Put GE to work for you today and reap the rewards of better fleet management.

Door Sensor

Dry vans can be equipped with a sensor placed on the door that will indicate when the door is opened or closed. A “door opened” or “door closed” message along with location, date, and time is sent when the door status changes. Using the Premier Services™ web interface, users can turn door sensors on or off using over-the-air (OTA) commands sent from their computer. Alerts can be set to notify key people when doors are opened or closed.

Cargo Sensor

Dry vans can be equipped with a sensor placed on the front wall that will indicate when cargo is present within the measured zone of detection. A “cargo loaded” or “cargo empty” message along with location, date, and time is sent when the cargo status changes. Using the Premier Services™ web interface, users can turn cargo sensors on or off using over-the-air (OTA) commands sent from their computer. Alerts can be set to notify key people when cargo status changes occur.



VeriWise TRUCKING–Satellite Door and Cargo Sensors



VeriWise TRUCKING–Satellite

Door and Cargo Sensors

Guidelines for Door Sensors

- Transition from closed-to-open @ 10° to 30° from closed position
- Transition from open-to-closed @ 30° to 10° from closed position

ENVIRONMENTAL

Operating Temperature Range: -30°C/-22°F to +60°C/140°F

Storage Temperature Range: -40°C/-40°F to +85°C/185°F

Operating Vibration: 1.82G rms (10Hz to 1KHz)

Non-Operating Vibration: 5.20G rms (10Hz to 1KHz)

Shock (half sine): 20G, 11ms duration

Humidity: 95% non-condensing

MECHANICAL

Dimensions: Magnet LxWxH: 3" x 1" x .05"
Sensor LxWxH: 3" x 1" x .05"
Terminal box LxWxH: 4.85" x 3 x 2.19"

Mounting: Magnet mounted to door, sensor mounted to frame, terminal box within 2' of the door

ELECTRICAL

Power Supply: Powered by VeriWise

Operating Current: <=10ua (average)

Sensor and Magnet manufactured by GE Security

Guidelines for Cargo Detection (std. size 4'x4'x4')

- Transition from unloaded-to-loaded @ 5' from front
- Transition from loaded-to-unloaded @ 16' from front

ENVIRONMENTAL

Operating Temperature Range: -30°C/-22°F to +60°C/140°F

Storage Temperature Range: -40°C/-40°F to +85°C/185°F

Operating Vibration: 1.82G rms (10Hz to 1KHz)

Non-Operating Vibration: 5.20G rms (10Hz to 1KHz)

Shock (half sine): 20G, 11ms duration

Humidity: 95% non-condensing

MECHANICAL

Dimensions: Face: 3.45" x 5.40"
Overall mounted depth: 2.50"

Mounting: Bracket fastened to front wall

ELECTRICAL

Power Supply: Powered by VeriWise, 3.6 to 8.0 VDC

Signal Interface: RS-232

Operating Current <=50ma (average)

RFI/EMI: EN55022, Class B or better

ESD: 2kV, Human body model, all pins

Manufactured by QUALCOMM Inc. and sold under license

Why GE?

More Information In Every Message

- Receive up to 10 events in every transmission, including location information, load status, beginning and end-of-drive and other available sensor data.

Best In Class Product Suite

- Motion sensor with alarm notification allows trailer to be "locked down."
- Detailed management reports and charts help users maximize efficiencies.
- Web-based interface delivers event-driven information, eliminates wasted time spent chasing equipment status.

Over-the-Air Programming

- GE makes system upgrades and enhancements wirelessly, eliminating the time and expense of taking trailers off the road.

Solid Customer Partnerships

- Leading transportation companies provide product insight and performance testing.

About Equipment Services

GE's Equipment Services business is a global provider of transport solutions for the world's supply chains. Offering a full range of equipment leasing and intelligence-based asset management and logistics services for manufacturers, retailers and shippers, Equipment Services enables the timely movement of raw materials and cargo for the global economy.

About GE's Asset Intelligence, a division of Equipment Services: GE's Asset Intelligence division represents the 'resource horsepower' of GE, deployed to address the challenges of the global supply chain. By leveraging the latest wireless communications and web technologies, the VeriWise (formerly FleetView from Terion) satellite and cellular based platforms provide intelligence based solutions to enable shippers and carriers with decision support tools to better manage their fleet, freight and maintenance operations. Quick access to actionable intelligence empowers customers to make more informed decisions about securing and optimizing their asset portfolios and streamlining their supply chains.

For more information, visit ge.com/assetintelligence.

For more information on our VeriWise TRUCKING-Satellite solution, visit www.trailerservices.com/veriwis or call 1-800-333-2030



All specifications are subject to change for product improvement without notice. GE® is a registered trademark of General Electric Co. Other company or product names mentioned in this document may be trademarks or registered trademarks of their respective companies, which are not affiliated with GE.

© 2007 GE. All right reserved
VWS - DCS-0307