

# Refrigerated Vans

Trailer Fleet Services from GE offers you an exclusive source to handle the challenges maintaining the life of your trailer fleet. And as a trusted supplier to the trucking industry for nearly a half-century, you can have confidence in GE's long-standing experience.

Our fleet of "smart reefers" are coupled with the lowest UA value insulated trailers (25% more than the industry average) and are the highest spec'd in the industry. The result is a fleet of trailers that provide you with:

- > A full line of services from finance packages to sale/leaseback options
- > Reefer leasing and rental programs custom designed to your specifications
- > Fully staffed and technically trained emergency response specialists 24/7, plus a network of Carrier and Thermo King authorized repair facilities throughout North America

## Features

- > 3,200 cfm airflow/56,000 BTU capacity @ 35°F\*; 25,000 BTU capacity @ -20°F\*
- > 30% more cooling capacity than other reefers (20% more capacity in deep frozen range)
- > 10% more fuel efficient than other reefers
- > 31% faster "pull down" than other reefers
- > Trailer prep'd for door cut off switches†
- > Ultra-fresh or modulation valve for tighter temperature control†
- > Rear remote control panel†
- > Composite stringers†

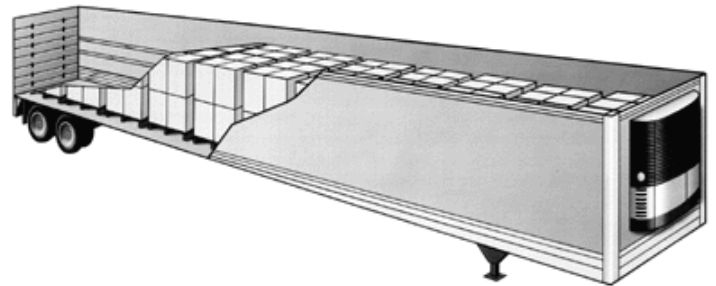
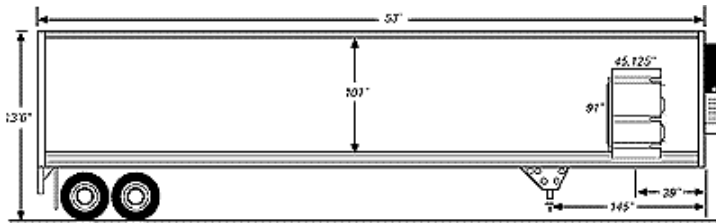
## Benefits

- > 15% more air flow than other reefers which means more consistent/sustained temperature control
- > Transport almost anything, in any temperature range, without compromising product integrity
- > *Less engine hours, less maintenance, higher residual value, higher safety, more convenient, more productivity*
- > Higher product integrity, longer shelf life, more revenue
- > Precise temperature control prevents top freezing of sensitive products

\*Based on new ULTIMA line  
† available in select locations



# 53' Single-Temp Reefer Specifications



- > 2S/1M anti-lock brakes
- > Sliding tandem axle
- > Automatic slack adjusters
- > 22.5 lo pro tires
- > Synthetic hub lubricant
- > Steel disc hub-piloted wheels
- > Air Ride/Spring Ride suspension
- > Tire carrier
- > 4" front insulation, 3" roof and floor, 2.5" sides
- > Hat channel cross members in upper front coupler
- > Air ride equipped with anti "dock walk" feature
- > Aluminum cross members in bay area
- > Heavy-duty duct floor
- > Forklift package
- > Carrier Ultima and Thermo King SBIII units
- > 12" heavy-duty aluminum scuff liner
- > 2.5" insulation in side doors
- > Reflective conspicuity tape
- > 50 gallon fuel tank
- > Vent doors on front panel
- > Stainless steel rear frame
- > LED lights on front corner and rear header

## Options:

Swing Doors, Overhead Doors, Air Ride, Side Doors, Lift gates, E-track, Flat Floors, Air Chutes, Modulation Valve, Automatic Door Cut-off Switches, Low Decibel Option, Remote Control Rear Panel, 24" high Door Track Protectors on Overhead Doors, Rear Vents on Swing Doors.